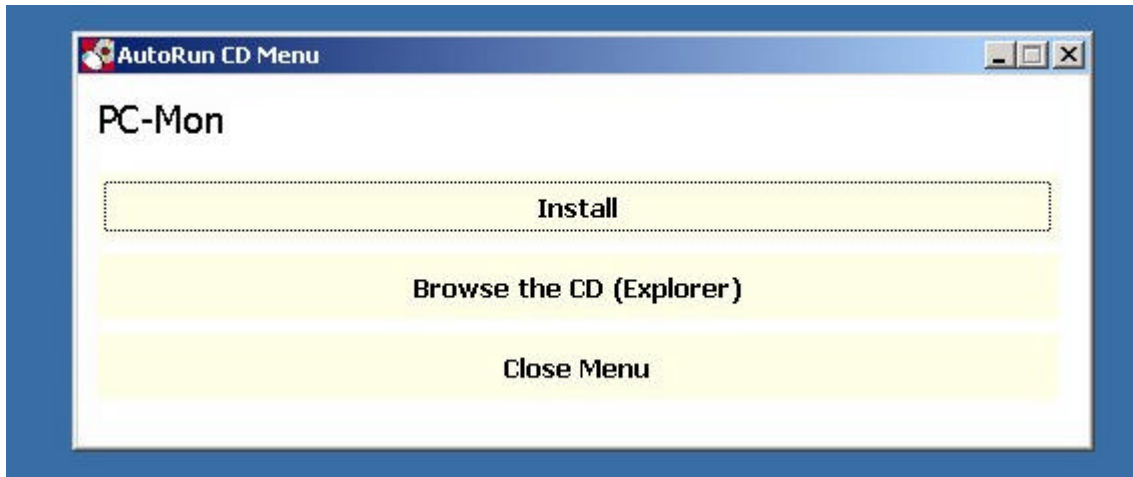


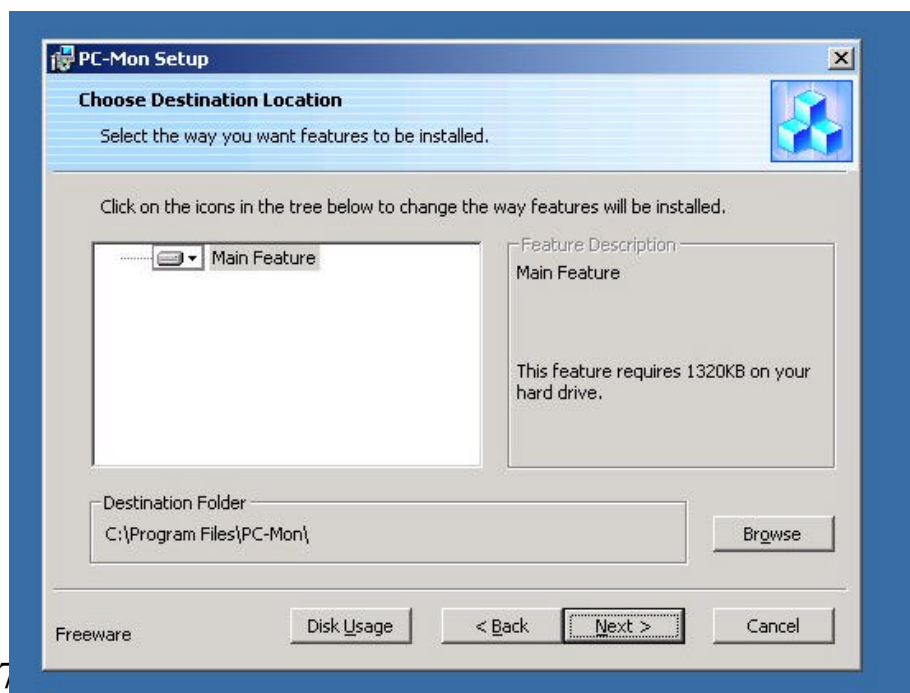
## 1 Install the PC-Mon software

Insert the CD and choose install once the Menu appears. Should the menu not appear automatically, open the cd in Explorer and run Setup.exe manually.



By default the installation directory will be C:\Program files\PC-Mon

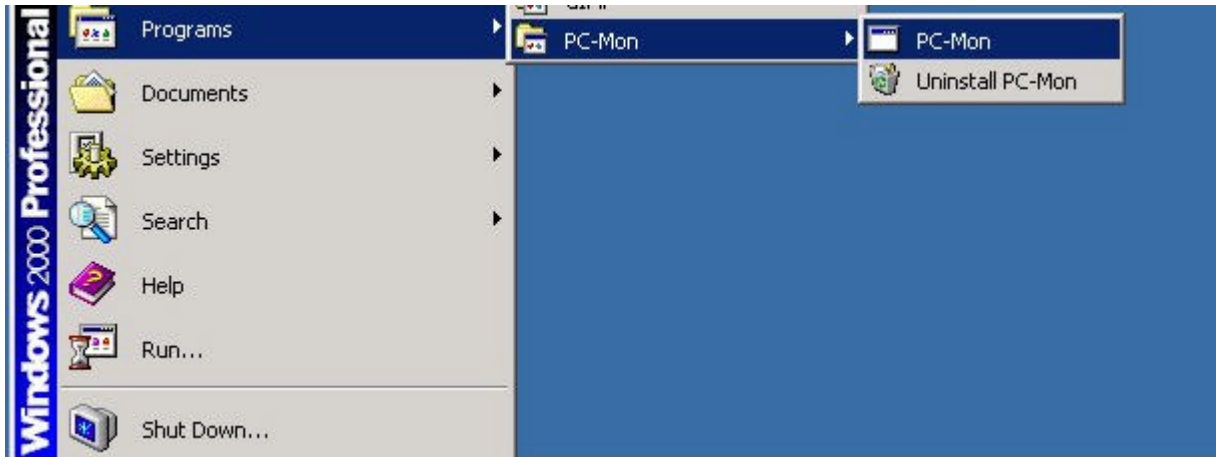
If you prefer another location you can choose one, otherwise just select Next and continue the Installation



5/22/2007

1

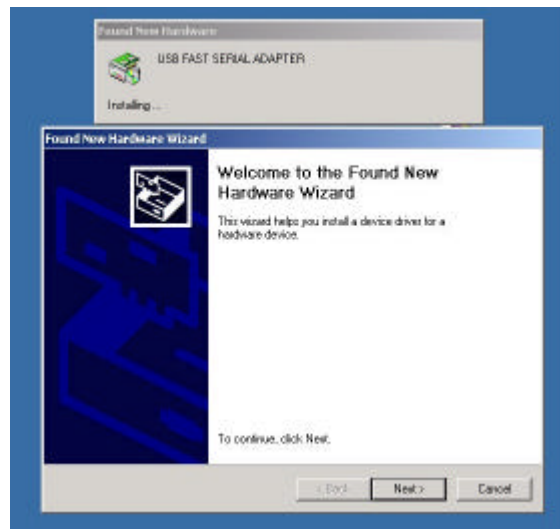
Once installed you can run the PC-Mon software from the Start menu. If you prefer you can always create a shortcut on the Windows Desktop manually.



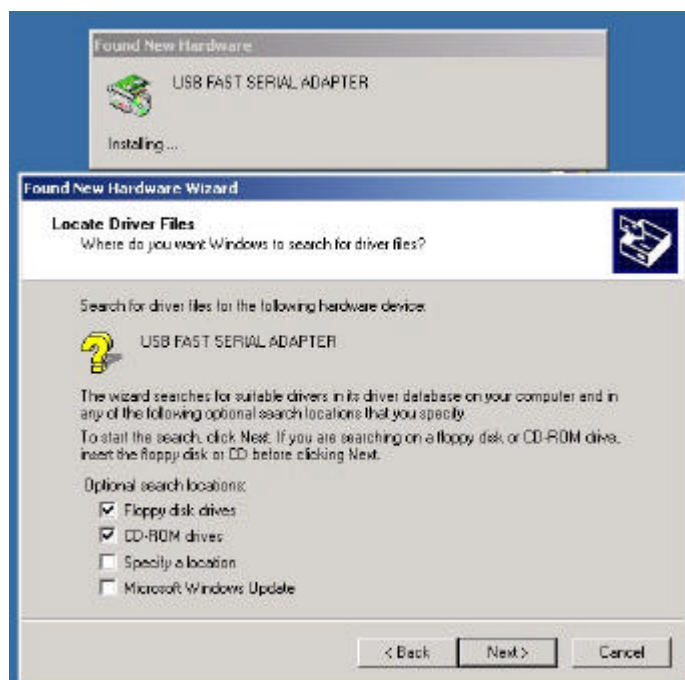
## 2 - Driver installation

Make sure the Installation CD is inserted.  
Connect the PC-Mon to the USB port.

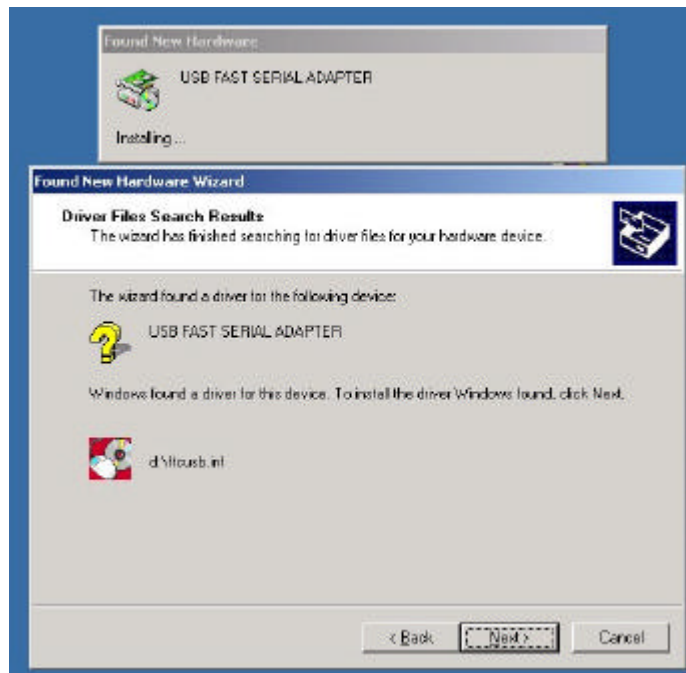
The Found New Hardware dialog will appear, and the Found New Hardware Wizard will start.



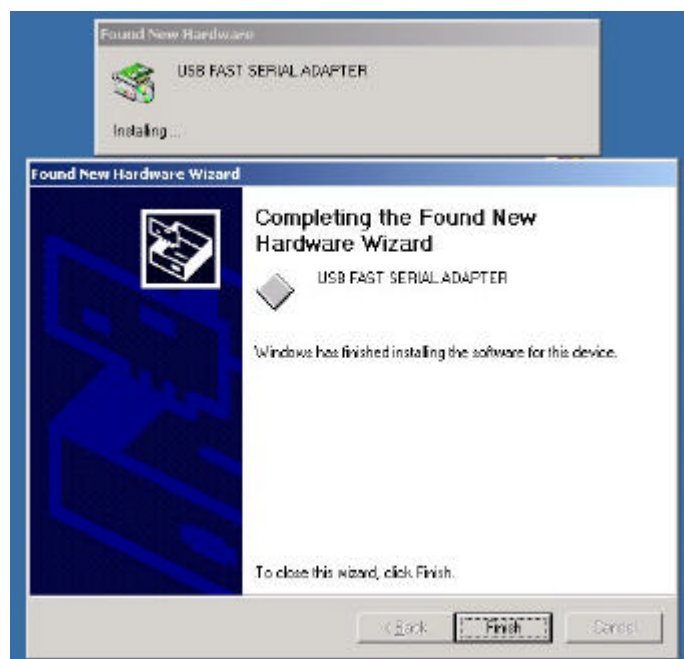
If asked for locations to search for a driver, make sure CD-ROM drives is checked.



After searching, Windows should recognize that it has found a suitable driver on the Installation CD



Once the driver is installed Windows will tell you that it has completed installation of the driver.



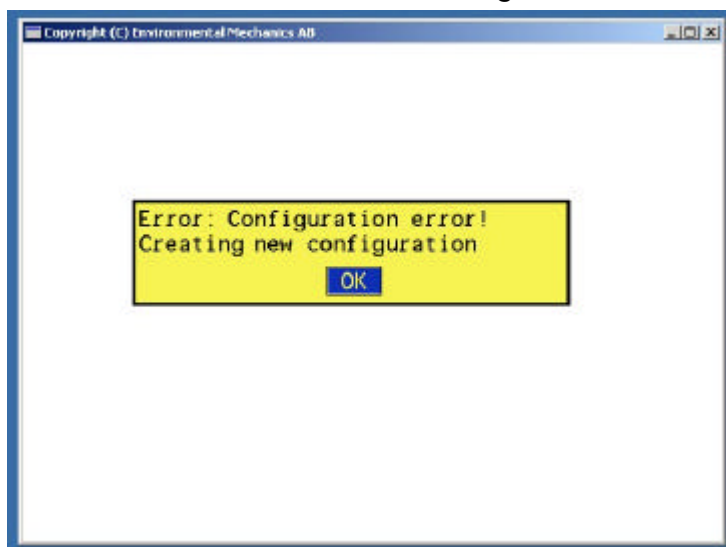
The process may then repeat itself, one or a few times. This is because the PC-Mon contains several USB devices and Windows may need to load drivers for each of them.

### 3 First start of the PC-Mon software / detecting communication ports

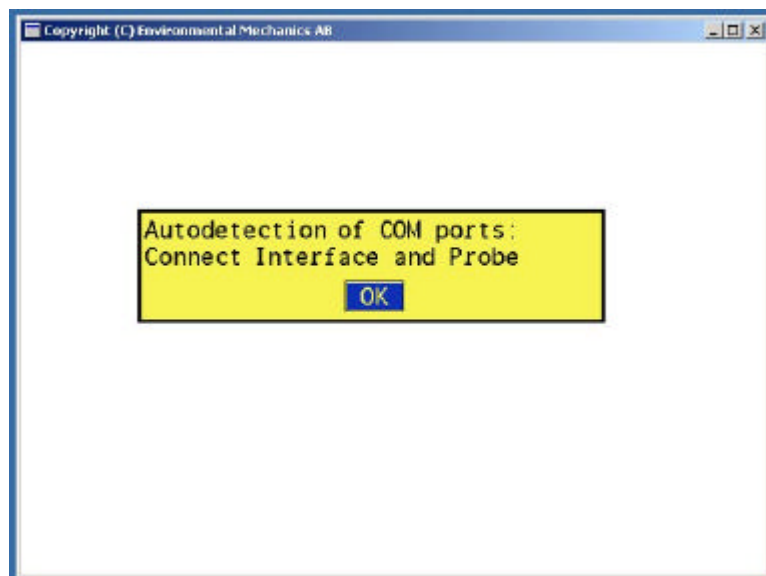
Keep a Memocone connected to the PC-Mon during this process, and make sure the PC-Mon has power.

Remember, the current release does not understand Mouse clicks, so you must operate the software with the arrow keys and Enter (using the Mouse Wheel also works)

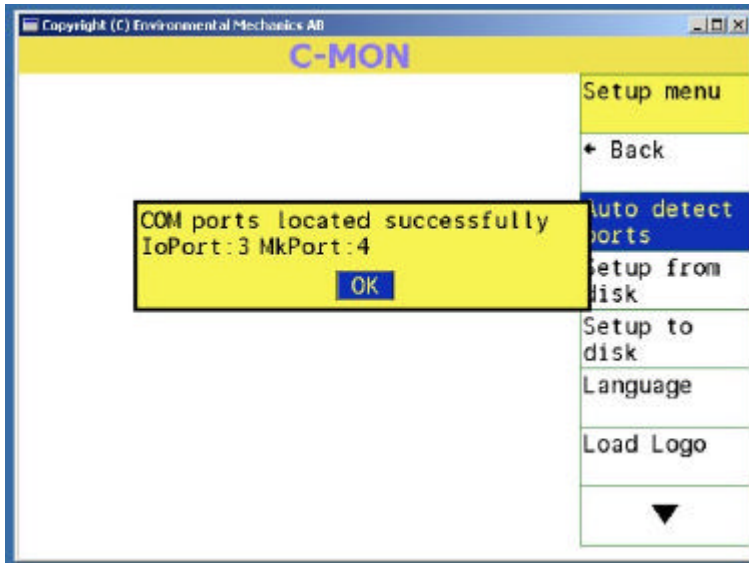
When you start the PC-Mon software for the first time, it has no configuration and therefore the error message is normal.



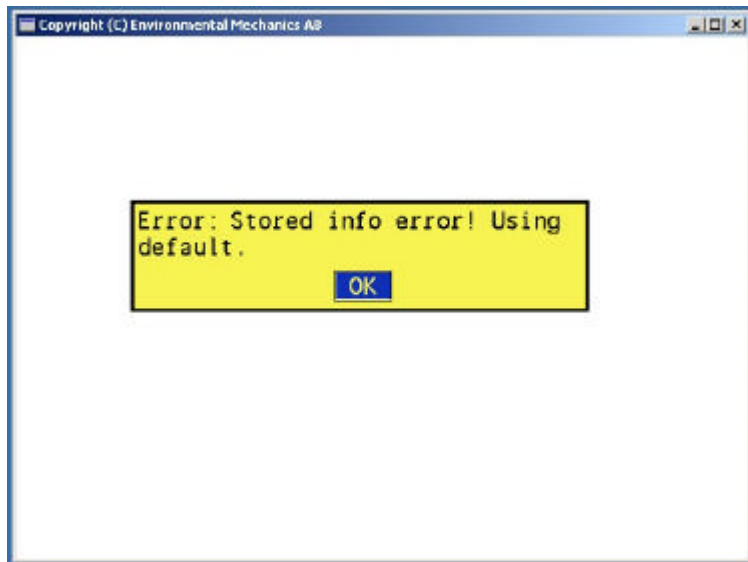
The PC-Mon software will now start the process of Autodetecting the communication ports for the Interface and the Memocone. This process can also be started manually via the Setup menu.



Once the ports have been successfully detected, you should get the following dialog (the actual port numbers may vary)



Finally a second "error" message will appear. This is also normal during the first run, since the file does not exist yet.



The installation is now complete and the PC-Mon is ready for use.

## In case of trouble, fault detection schedule

<p>1. The PC-mon software runs but the PC hangs up in Windows after some time.</p>	<p>To minimize the risk that the PC hangs up in windows, re- start the PC-mon software for each test.</p> <p>If this does not help, try to re- start even Windows for each test.</p> <p>Disable any Screen saver and Power saver.</p>
<p>2. PC-Mon Software cannot find the Interface unit after PC has returned from Sleep, Standby, Hibernation</p>	<p>Shutdown and Restart Windows.</p> <p>When doing CPT soundings, please disable Windows from automatically entering Sleep, Standby, Hibernation mode. This can usually be configured in Control Panel, Power settings</p>
<p>5/22/2007</p>	<p>8</p>