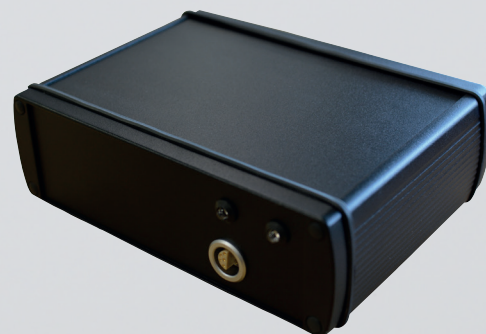


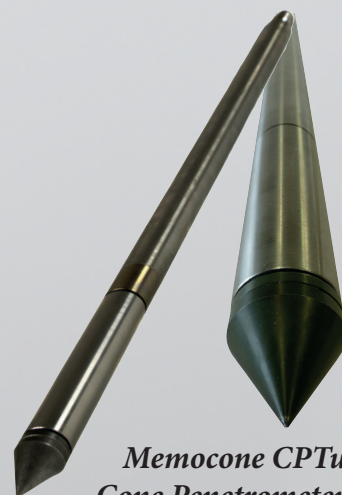
ENVI 20 TON CONE PENETROMETER PUSHER

Our CPT pusher unit is a perfect choice if you need 20 ton pusher capacity from a small and flexible yet affordable unit.



Envi logger C1™

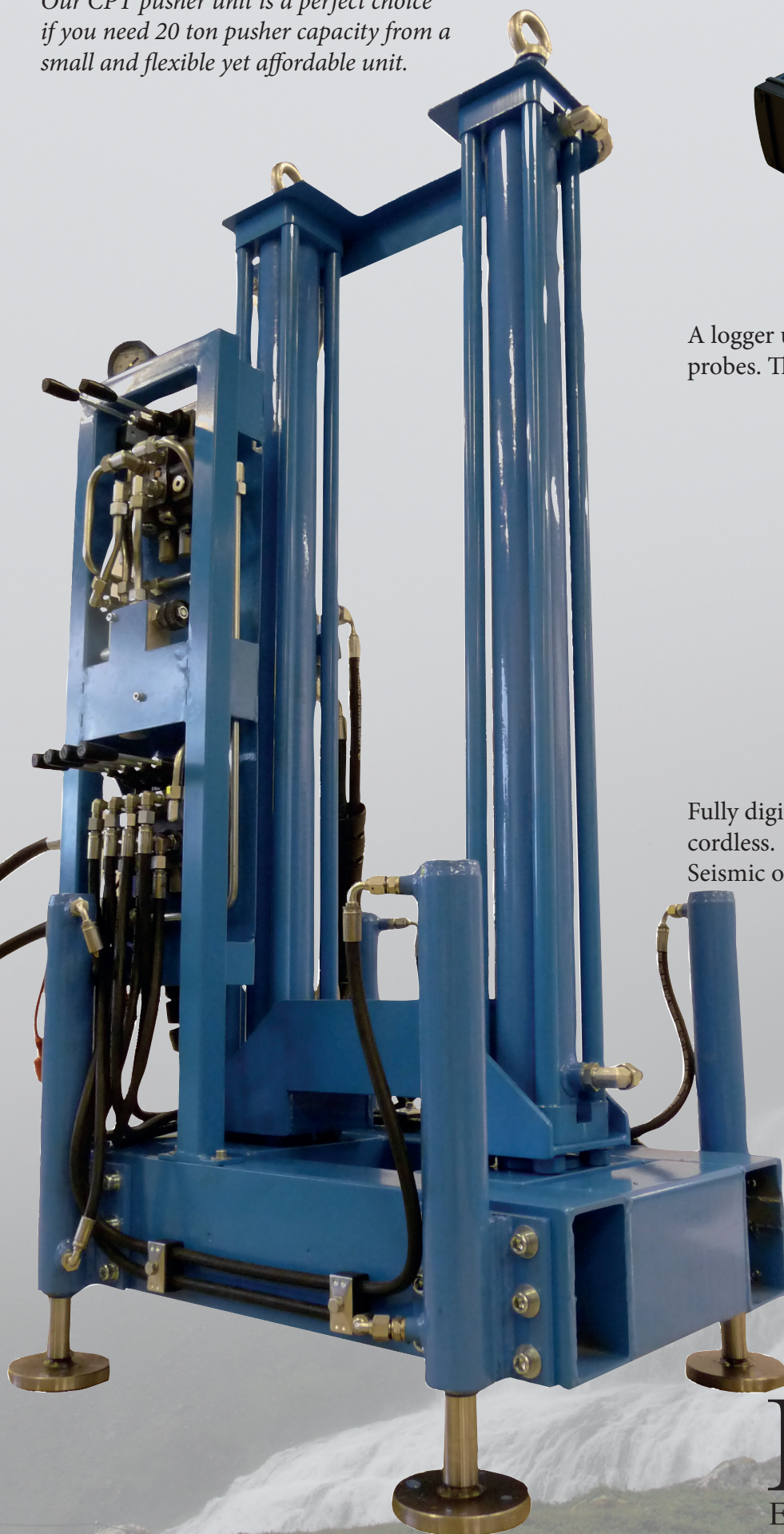
A logger used for CPTu and other types of probes. The brain of our pusher unit.



***Memocone CPTu
Cone Penetrometer***

Fully digital Envi CPTu probes. Corded or cordless.

Seismic or Resistivity add-ons available.



Envi field computer

The Envi Field Computer features the integration of a brilliant 10,4" touch display and a high performance yet energy efficient Intel® Atom™ N2600 Cedar View 1,6 Ghz CPU.

The computer weight is only 1.1kg and is designed to meet IP64 protection to withstand water and dust. Wide temperature suport between -20 to +50 degress centigrade.

Features:

- Touch screen 10,4"
- Wireless network
- Camera, RFID
- Fanless
- No moving parts
- Vehicle mount



Engine and hydraulic



Engine

Honda GX390

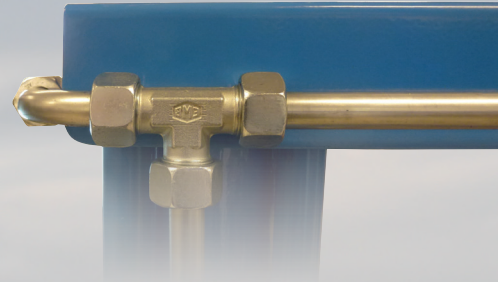
11,7 HP / 8,7 kW

Max effect at 3600 rpm

Max torque (26,4 Nm) at
2500 rpm

EMB

High-grade hydraulic
fittings



Hydraulic pump

Turolla Open Circuit Gear

SNP2NN/011 RN01BA P1C3C3 NNNN/NNNN 21 JLY09 00444

Max nominal/operation pressure 250 Bar

Max pressure peak 280 Bar

Displacement 10,8 cm³/rev

Max rotation 4000 rpm gives Max flow ~ 43 litre/minute



The pusher is small enough to be transported on a pick-up truck or on a trailer. The anchoring system operated by two persons will anchor the pusher in all types of soils.

The two hydraulic cylinders have a stroke of > 1 m so you can push 1 meter rods in one stroke. This pusher is the second generation pusher sold by Envi. It succeeds the successful pusher manufactured in Thailand that was earlier resold by Envi.

Produced, developed and manufactured in Sweden.



Environmental Mechanics AB
Kunegårdsgatan 7
441 57 Alingsås
Sweden

<http://www.envi.se>